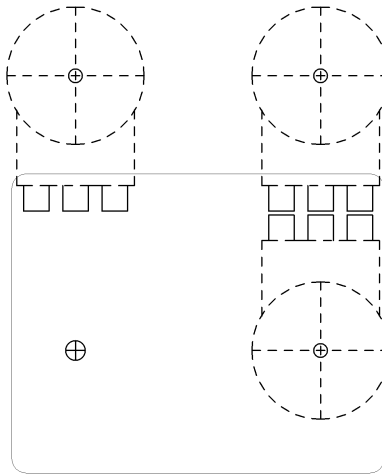


# JMK PCB DRILL TEMPLATE

## Blue Warbler



Horizontal Knob Separation: 1.25"  
Vertical Knob Separation: 1.4"

Please note, this diagram is given as an example. Your PCB may be a different size. Match up the potentiometer location, but ensure your PCB will fit in the space you need it to fit into. Please also note that the Pot size assumed is:

Alpha 16mm PCB Right Angle Mount Potentiometer

Some PCBs that use this template will include switches, and some will not. Do not drill too many or not not enough holes for your PCB.

**Use this drill template with discretion! Please note that JMK PCBs is not responsible for drilling mistakes or errors. We have provided this document with the knowledge that the user assumes all risk. Measure twice, drill once!**

This Document is designed for personal use only! Do not use this to create a product for sale without permission of it's owner: [jmkpcbs@gmail.com](mailto:jmkpcbs@gmail.com)