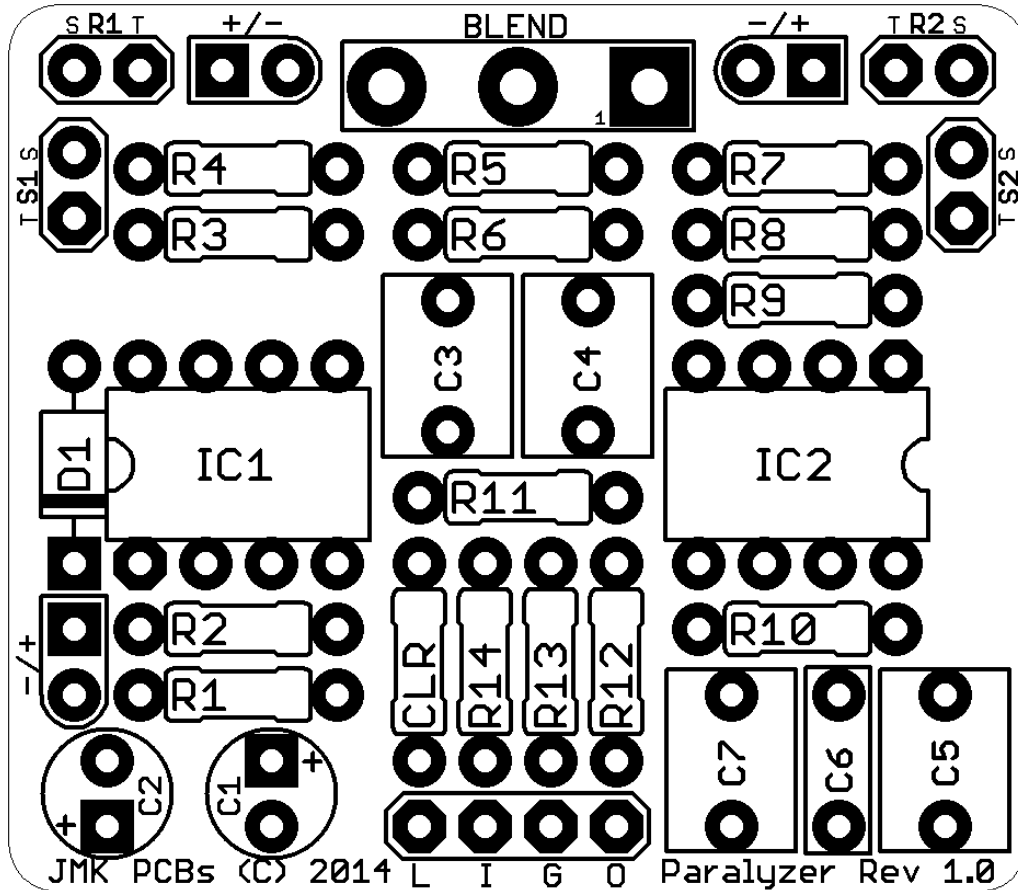


JMK PCBs PRESENTS...

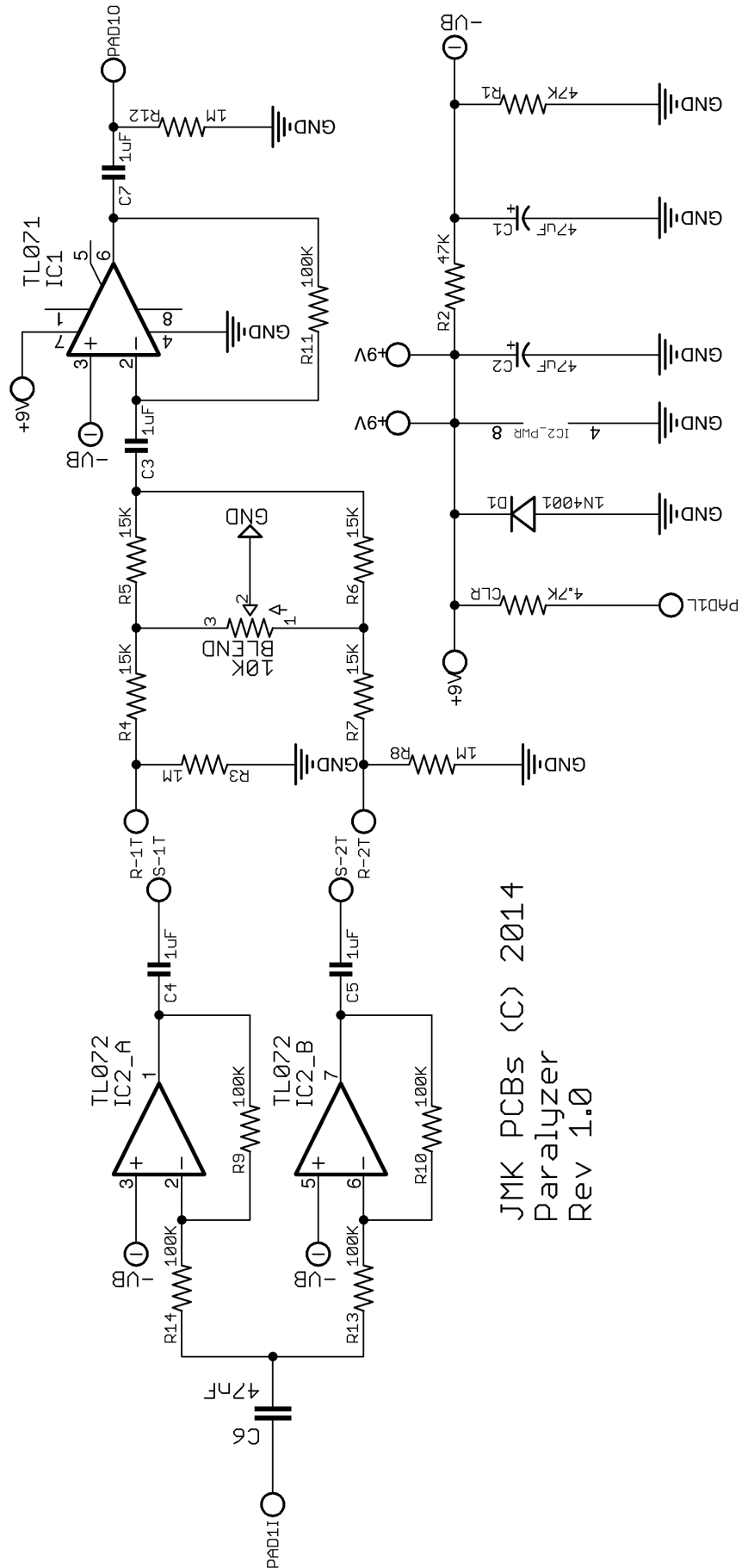
PARALYZER

PCB AND SCHEMATIC ARTWORK (C) 2014 JMK PEDALS
VERSION 1.0: 10/4/2014



Resistors		Capacitors		IC			
R1	47K	R8	1M	C1	47u	IC1	TL071
R2	47K	R9	100K	C2	47u	IC2	TL072
R3	1M	R10	100K	C3	1u*	Potentiometers	
R4	15K	R11	100K	C4	1u*	BLEND	B10K
R5	15K	R12	1M	C5	1u*	Other	
R6	15K	R13	100K	C6	47n	D1	1N4001
R7	15K	R14	100K	C7	1u*	CLR	1K-10K

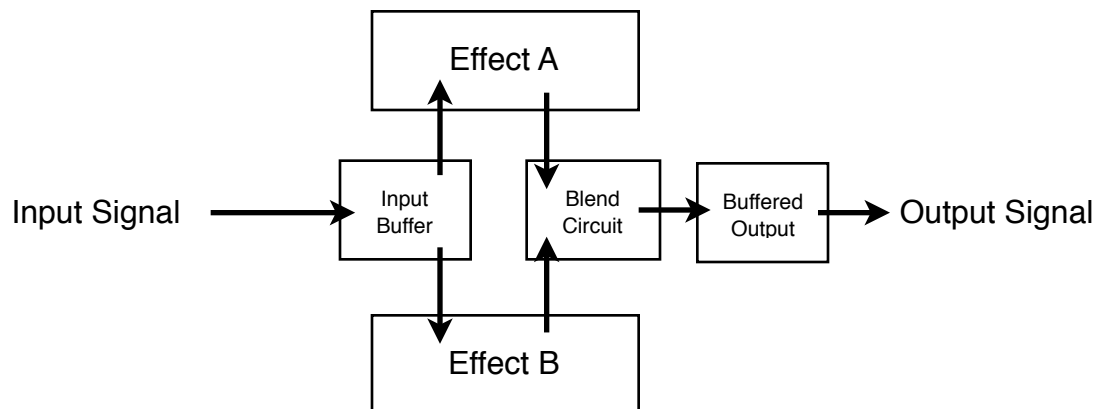
This Document is designed for personal use only! Do not use this to create a product for sale without permission of it's owner: jmkpcbs@gmail.com



JMK PCBs (C) 2014
 Paralyzer
 Rev 1.0

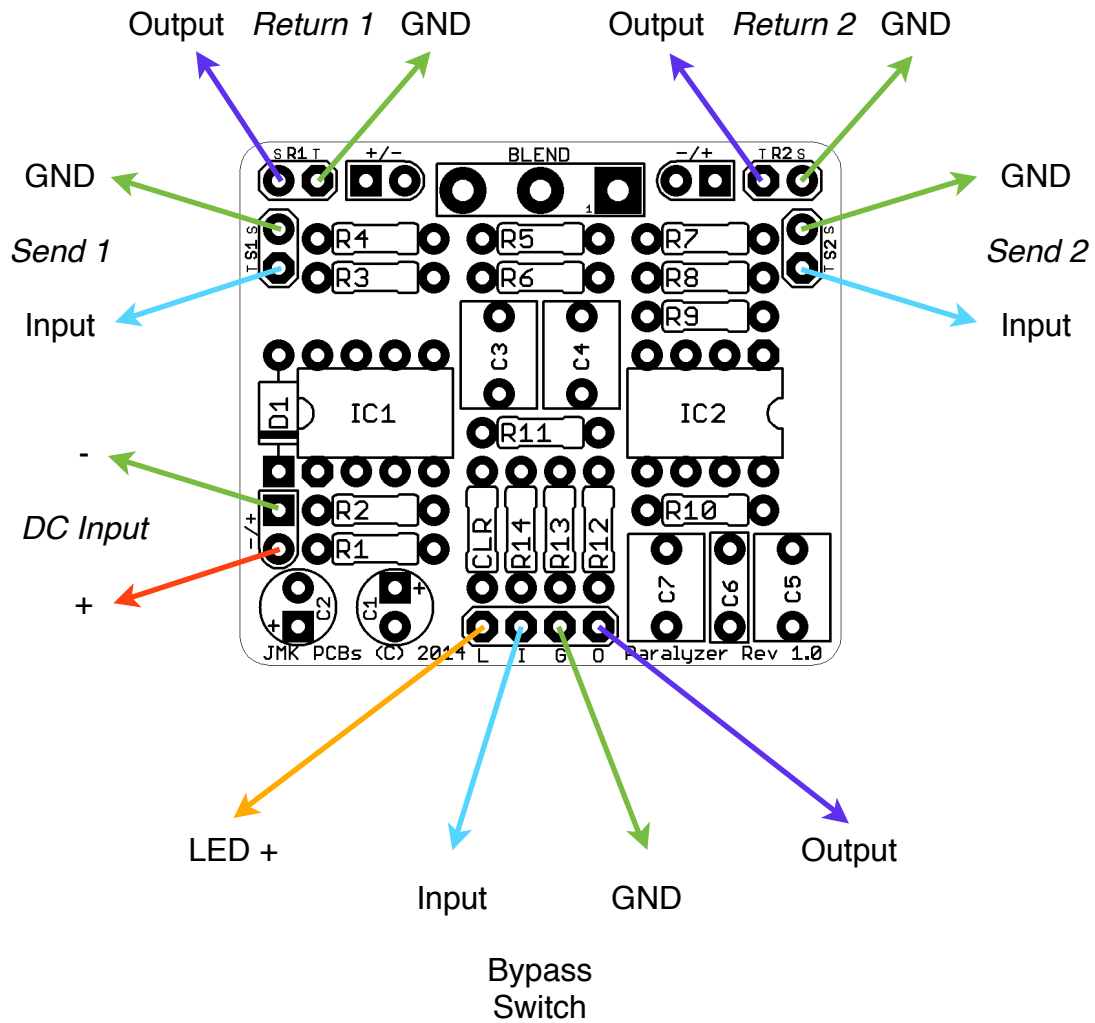
BUILD NOTES

- The Paralyzer is an expanded version the JMK Panner. Whereas the Panner project allows you to place one circuit in a loop and then blend that signal with your dry signal from full wet to full dry, the Paralyzer replaces the 'dry path' with another loop, giving the user a pair of loops to place other effects into. Essentially, this allows the user to split their signal and run two different parallel circuit paths which are then blended back together into a mono output.
- The Paralyzer is useful in at least two ways:
 - It can be used as a stand alone effect in it's own enclosure, with an input and output jack, as well as two sets of send and return jacks. You can then place any effects you desire in parallel loops, and then 'mix' them together again.
 - It can be incorporated into an enclosure with two or more effect pcbs. The additional pcbs are incorporated into the loops by using the send and return pads to connect to the input and outputs of those circuits. Note that a couple extra +/- connections are given for those circuits to keep you from wiring too many wires to the DC Jack.
- The real big question on this one is, "why would I run effects in parallel?" Some effects really change the sound of your guitar signal. Sometimes, those changes can be really positive, but when combined with the changes another effect might apply to your signal, you can get some bad results. For instance, running a high band distortion and a lower octave Fuzz pedal at the same time - each are awesome on their own, but together your sound can be a little blurry and crazy, and sometimes it's tough to figure out which one to put in front of the other. The paralyzer gives you the flexibility to run them at the same time, but not into each other! Now you can run two or more effects on your original signal without having them affect the other. Here's a visual example of the signal path:



- The ICs recommended in this project are not the only types that can be used. While the TL07X series are reliable and easily found, there are plenty of options to choose from. **We highly recommend socketing your ICs!**

PARALYZER WIRING DIAGRAM



TRUE BYPASS WIRING DIAGRAM

